





700447SV

700447SV

DETTE ER LIKE STRØM

050

150

050

94391-04



DETTE ER IKKE STREK

700447 SV

050

03

050

10-16216-01



WIP

HPOGT

5Δ
← →
C

870

TTE ER IKKE ST









50
50
0034-D4

V
A
203

1-FALL SWL DUT 7-32M
1-FALL SWL 187 7-32M
2-FALL SWL DUT 7-32M
2-FALL SWL DUT 7-32M
AUX SWL DUT 6.5-32M



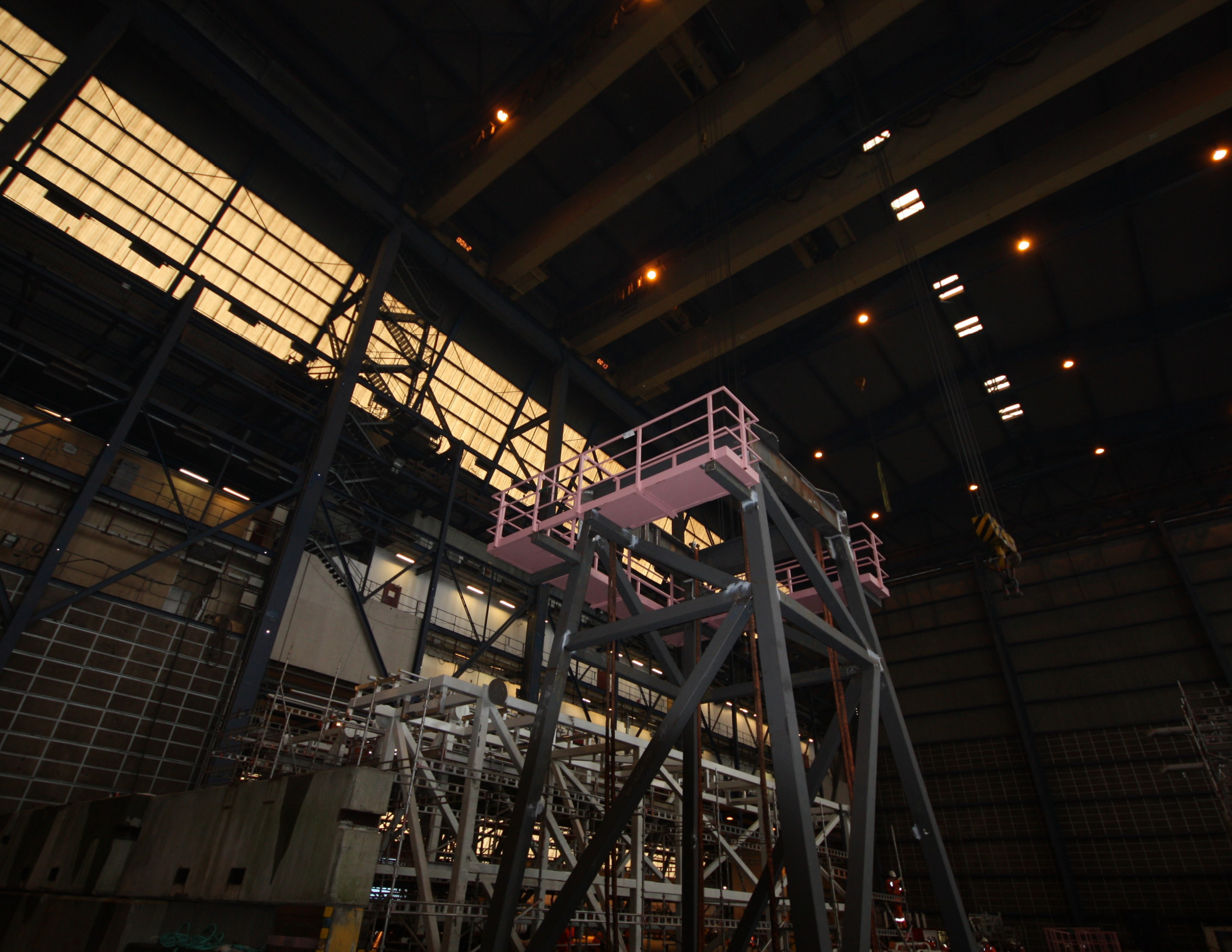




700609-050-560
201-8

















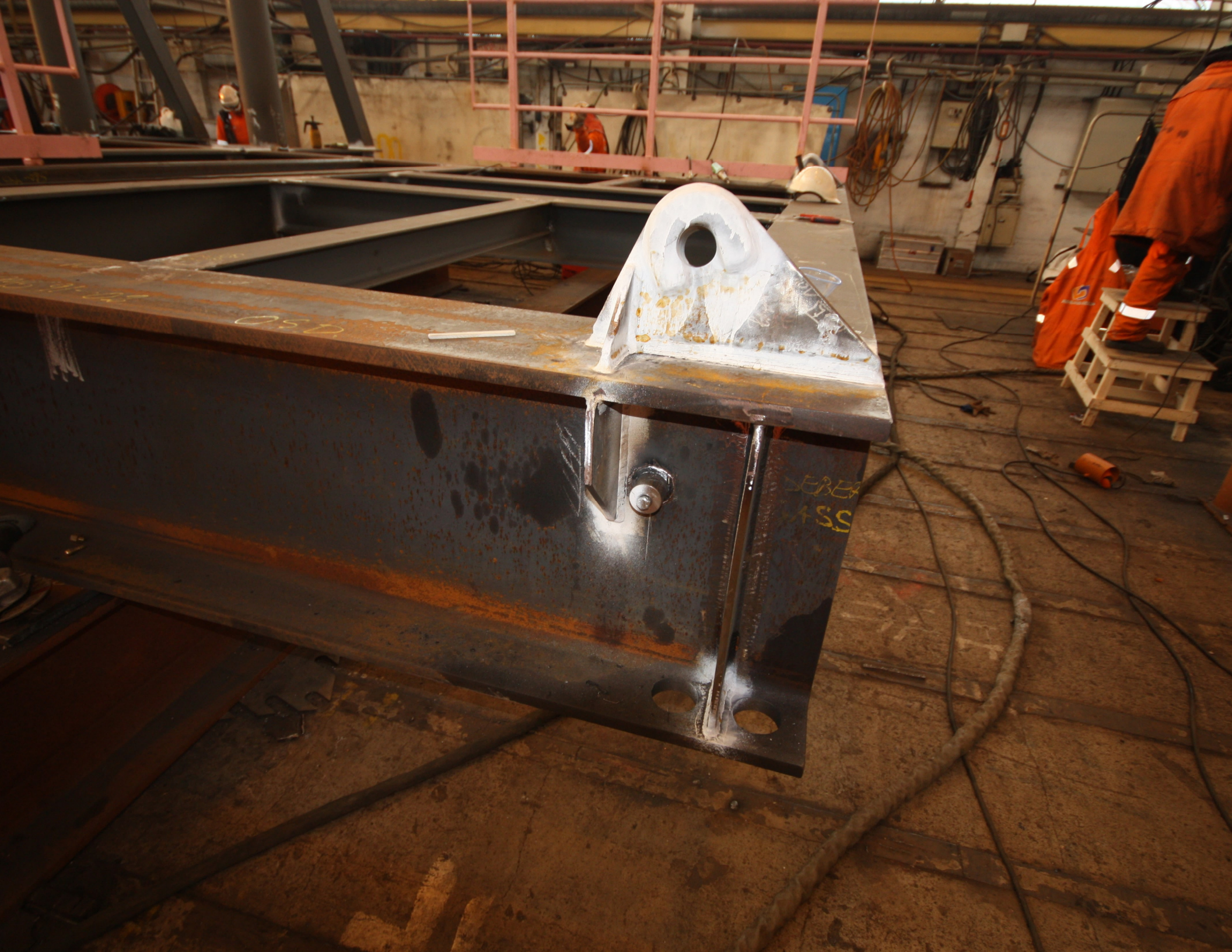
500-4591-02

OSD



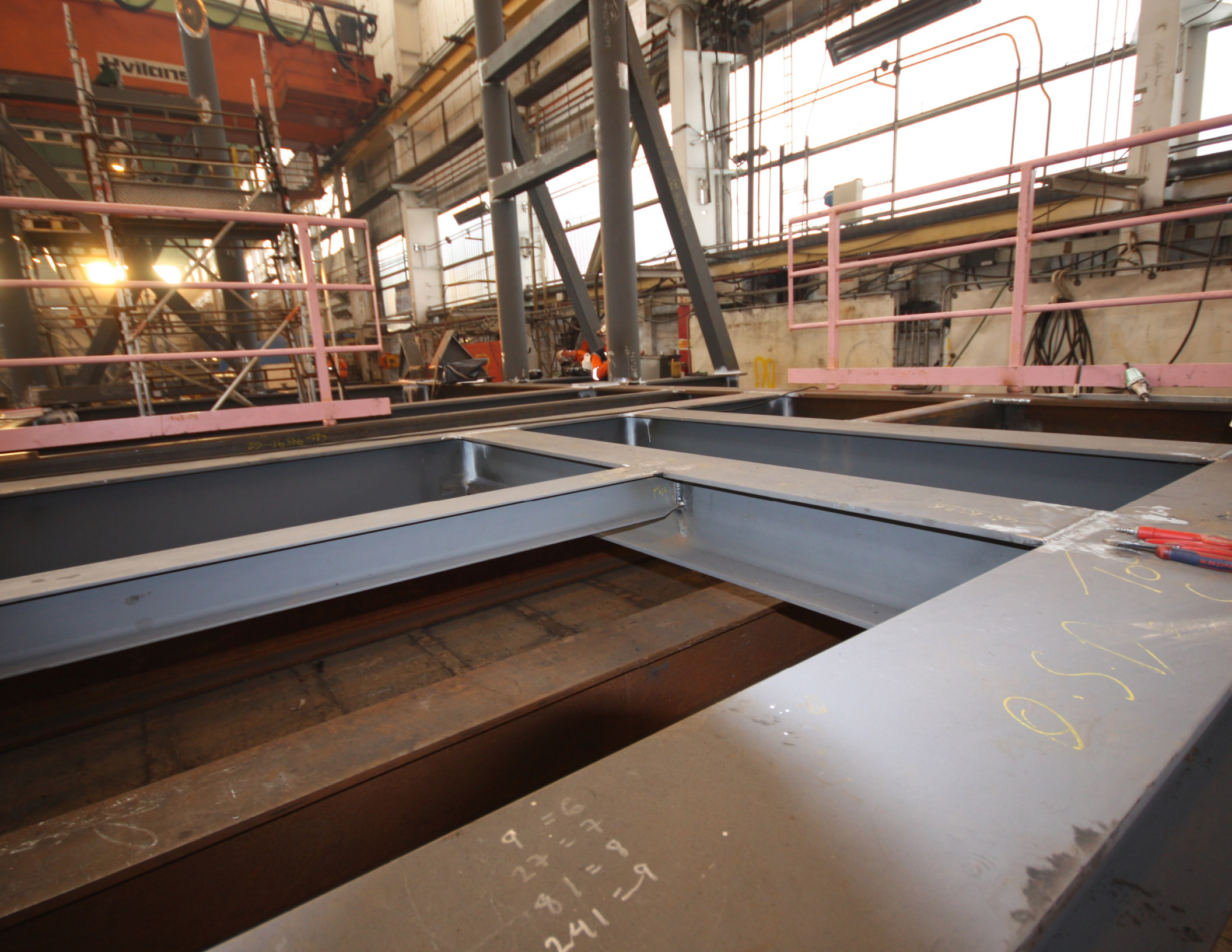
EPES
4SS







EBER
SS



Hvilans

0.5.10

241-9
281-8
271-6
291-9



Hvilans

aibel

TSP

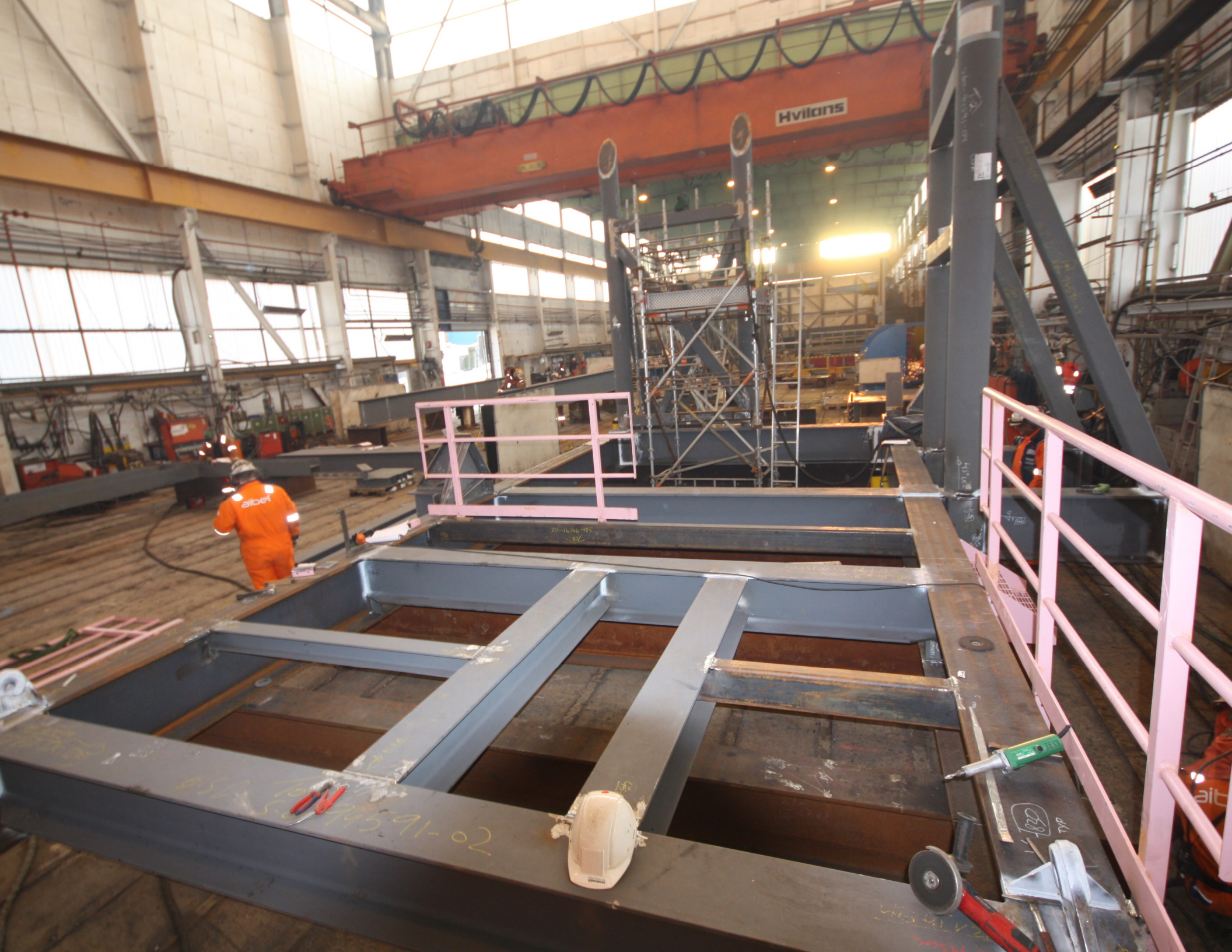
45-91-02

560945913



Hvilans

atel



Hvilans

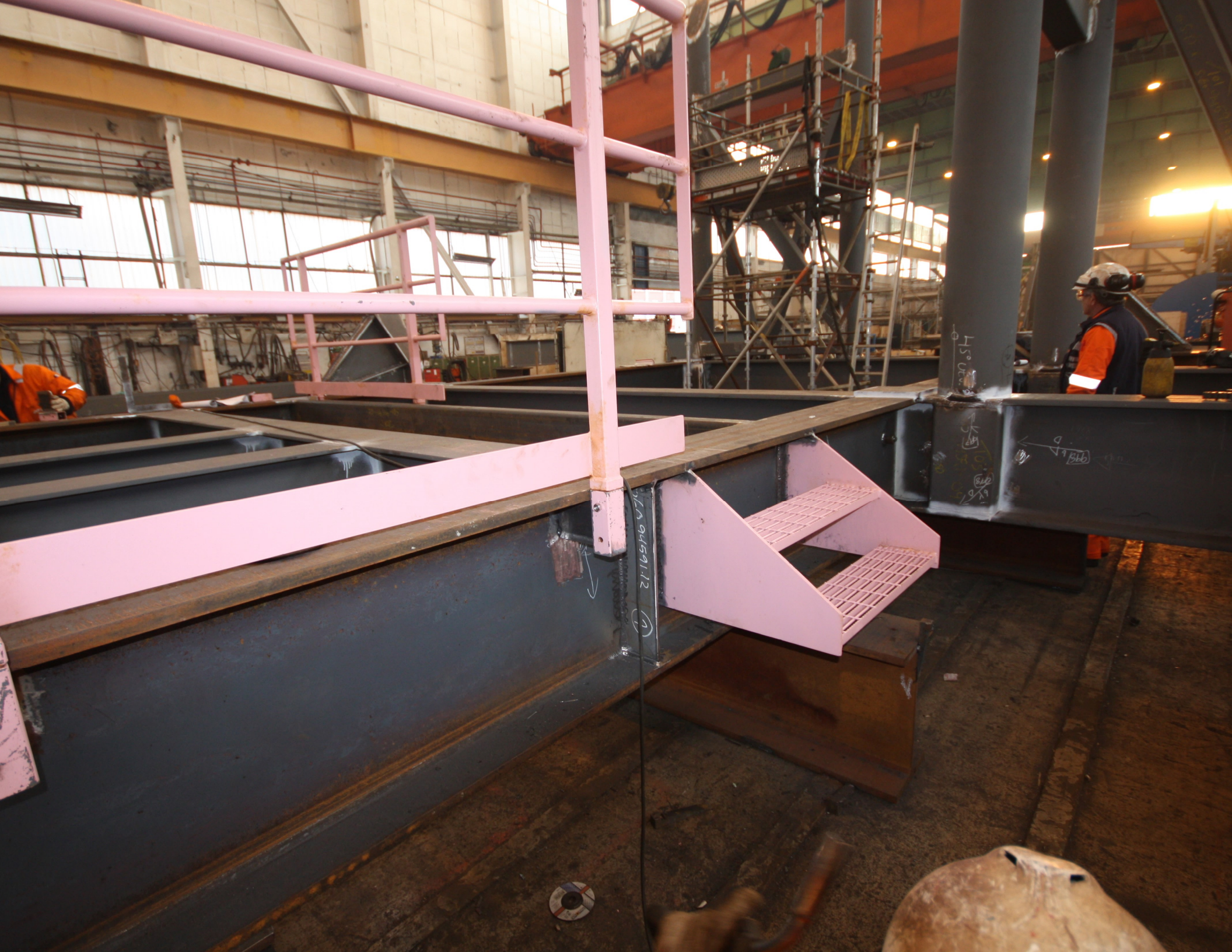
abet

16-15-91-02



16-15-91-02





NA 94591.12

(11)

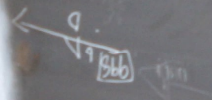
H5000

← 94591.12 →



14-25114

H500000



996.11.11.11

1201
FOR
EST. 001
BERG



ASCO
101-94591-04
360

101-94591-04
360

101-94591-04
360

101-94591-04
360

101-94591-04
360



HVILK

L
K
21

C 801

145886

1-5-1





SV
0409

105

105

10-165hb-0

105

105

105

SV
0409

W
98854

1031-0
1031
DSC-0450
DSC-0450

DSC

878
49
49

866
19

115886
M

050-94541-103
050
050

866

878









10
10

→
1
5
56

10
10



300

993

Handwritten markings in white ink, including "RUC" and "RUC" with a circled "R".

Handwritten markings in white and red ink, including "RUC" and "RUC" with a circled "R".



Handwritten markings in blue ink, including "RUC" and "RUC" with a circled "R".





008

possible

2.5
P430





Gamma

←
800
D.V.M. 1000

1.27
D.V.M. 1000





07-10-10

22

Handwritten text on a metal surface, possibly a name or date, partially obscured by shadows.



17

88

993

←



SHIPSHALL ØST (INN)



AG 3076



SHIPSHALL Ø57 (I)

Handwritten markings on the metal structure, including "1111 S61" and "SHIPSHALL Ø57 (I)".

Handwritten markings on the metal structure, including "SHIPSHALL Ø57 (I)".

Worker in orange safety suit and white hard hat.



150/151

Handwritten technical markings and diagrams on the metal surface, including a cross-section diagram and various alphanumeric codes.

1158 600





101 ✓
560-94591-03
OSD



~~SI~~

FA 26
998 26
D

101
9459-09
D

18864

18864



VV 0070
WLL - 50/5 T

VERBODEN TOEGANG
WAGEN
WAGEN

VERBODEN TOEGANG
WAGEN
WAGEN



Handwritten red markings on the metal surface, including a star symbol and the number 94.



Kredsløpsbryter
for travestruktion
VV0106
VV0108
VV0109

hc-11554h-005
SHIP SHALL Ø31 (100)

Worker in orange safety vest and white hard hat.

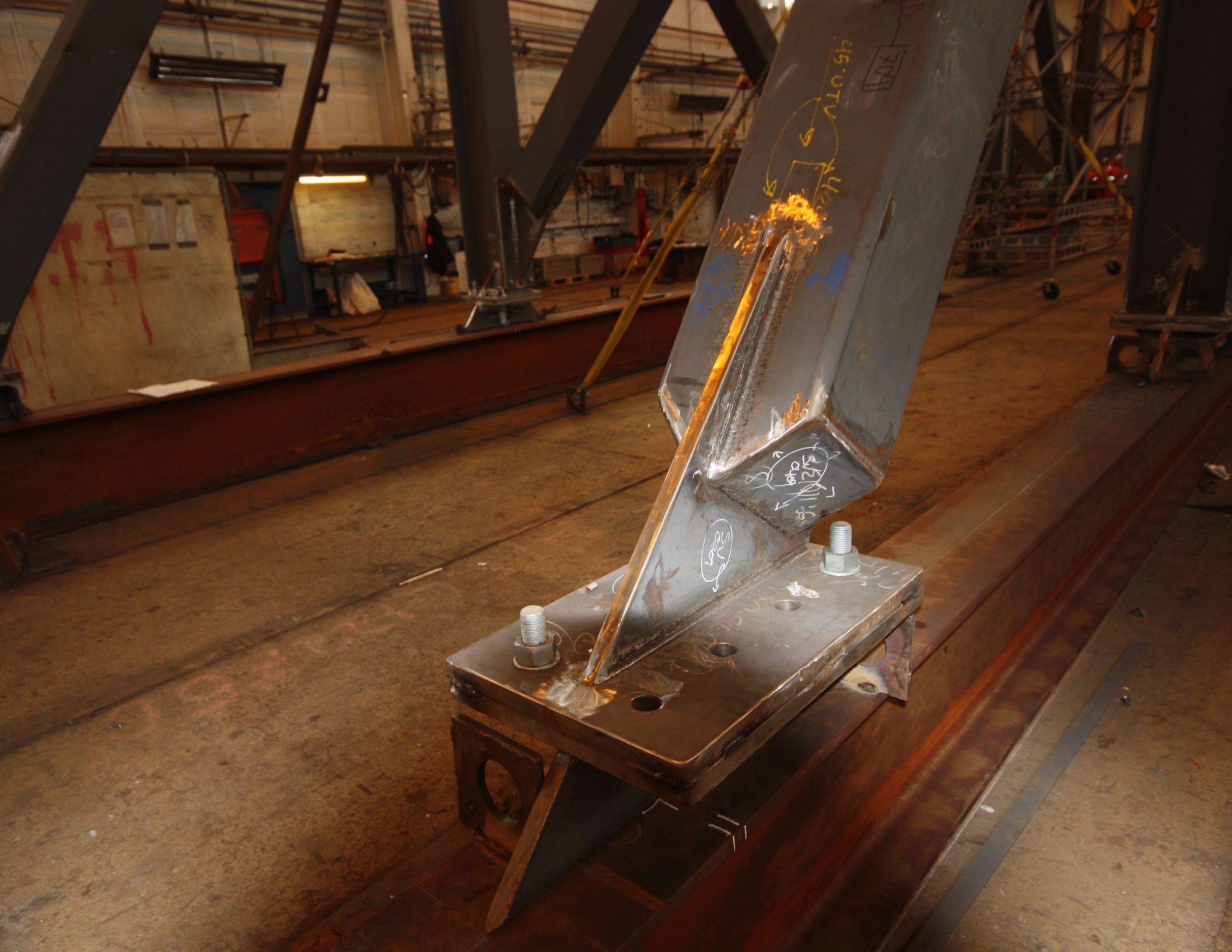
Worker in orange safety vest and white hard hat on a platform.











45.0TV

304

S12
S11
S10
S9

S12
S11
S10
S9

S12
S11
S10
S9



100 CSC
559 110-13 0009

LOLA 13000

SMITH B













COMABI











0523576 D. GMS
700 409 - 03D - 46 -
94 991 - 30



023576 0-645
730-00-030-50-
04141-30



6270
2442
6270
6270

UT OK
05.12.09
9F

792017

8276
C6
2544

T.R. Typ

1
560.4419.12

45420





CT OK
65.12.09
M5

792099

838

①

838

838

792099

65

65

65

65

65

65

65

65

→

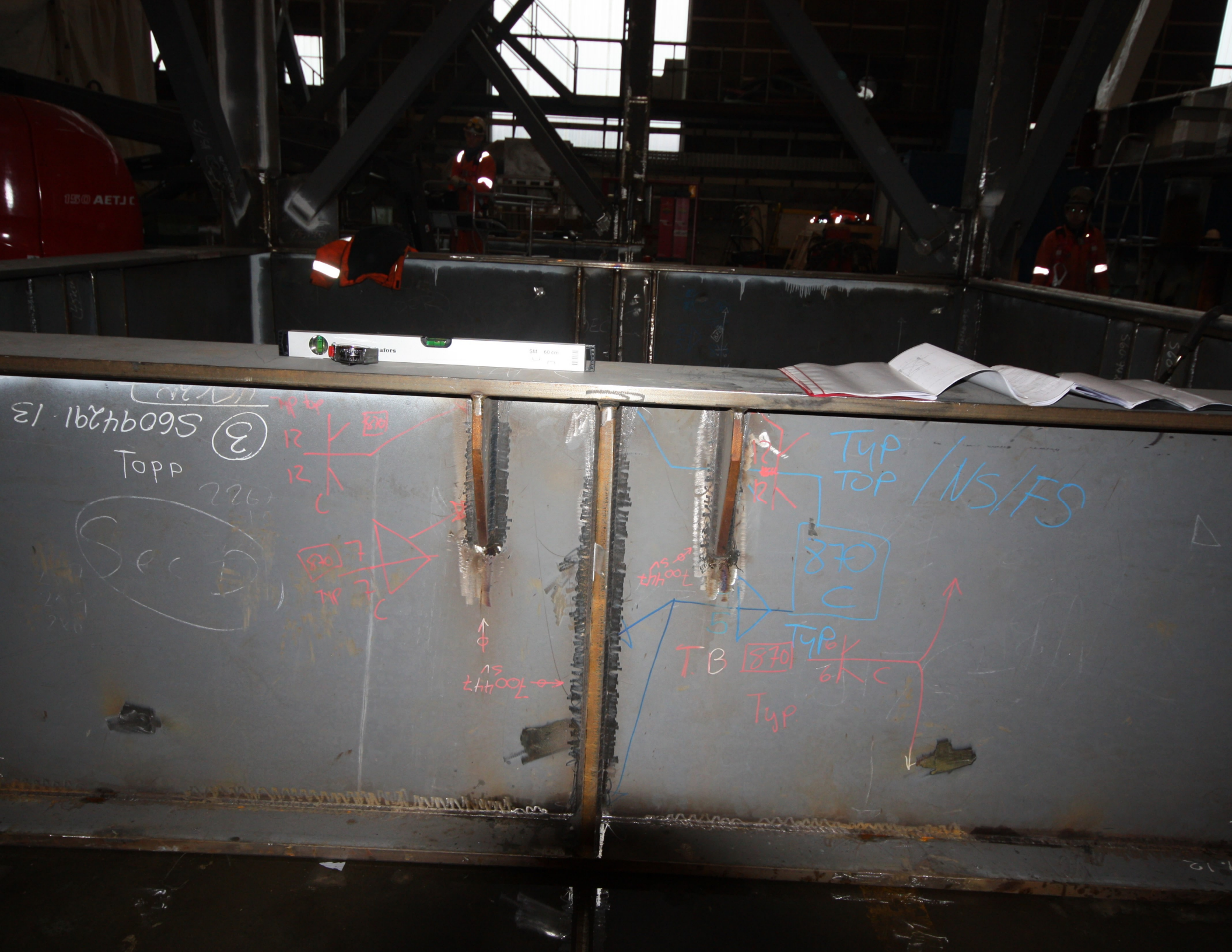
→

→

→

→

A



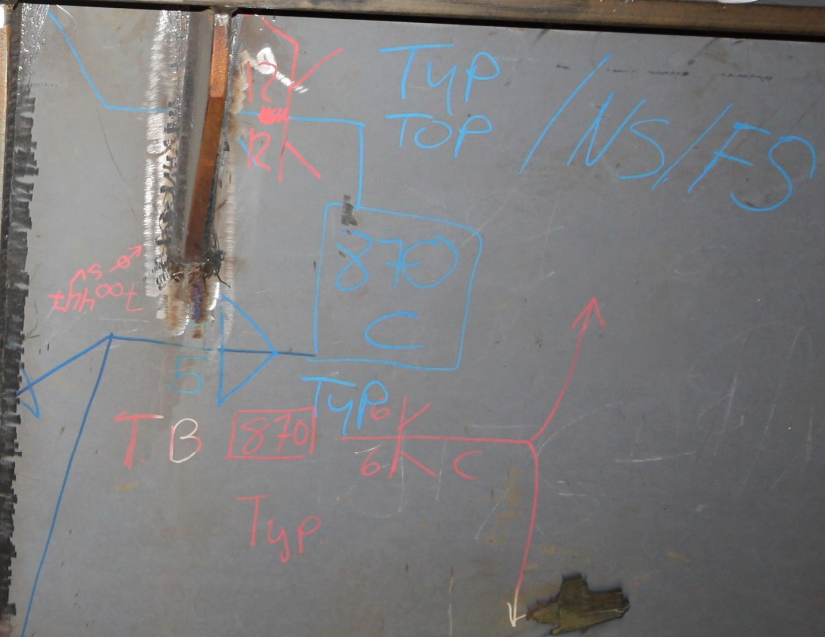
SM 60 cm
Level

51 168hb09S ②
TOPP
226
Sec D



↑ φ
NS
↑↑↑ 00L →

Technical drawing sheets on a table in the background.



1.12

MANITOU

103886
103886

560.94291.12

560.94291.12

830

UT OK
05.12.09
GF

A6
A6 820K TYP

830

③ 56094291.13

Topp

Sec 2













MANITOU

150 AETJC

Compact

MANITOU



106 D
56.944.21.02

Ø57

Handwritten technical markings on a vertical beam, including a square symbol with a cross inside and some illegible characters.





60.944.91.02

45075

Handwritten markings on the steel beam, including a diagram and the number 144.

144



7004476



11.16.2019
09:25

830K TYP.

P. 870

7004476
SV

UT OK
05.12.09
CF
B





MPI+1
OK
23/1

21.09.12

WORD:

5.6.0.09.91.12

21.09.12



010726-095





